

Name _____

Date _____

1. $y = -2^{x+1} + 1$

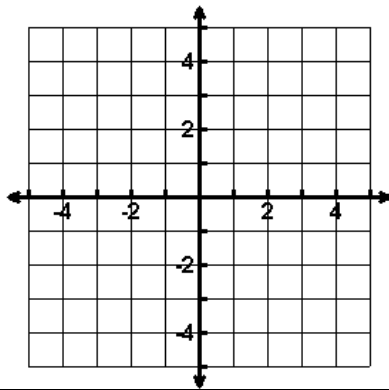
Transformations: _____

Domain: _____ Range: _____

Asymptote: _____ Inc or Dec _____

X-Int: _____ Y-Int: _____

End Behavior: $x \rightarrow \text{_____}, f(x) \rightarrow \text{_____}$
 $x \rightarrow \text{_____}, f(x) \rightarrow \text{_____}$



2. $y = -\log_3(x+1) - 2$

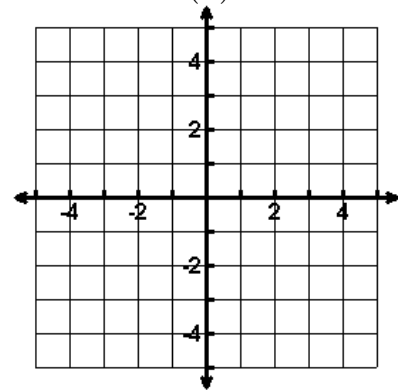
Transformations: _____

Domain: _____ Range: _____

Asymptote: _____ Inc or Dec _____

X-Int: _____ Y-Int: _____

End Behavior: $x \rightarrow \text{_____}, f(x) \rightarrow \text{_____}$
 $x \rightarrow \text{_____}, f(x) \rightarrow \text{_____}$



3. $y = \log_4(x-2) - 1$

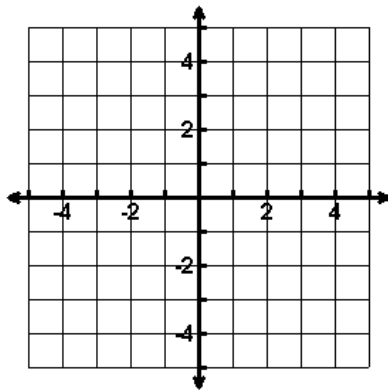
Transformations: _____

Domain: _____ Range: _____

Asymptote: _____ Inc or Dec _____

X-Int: _____ Y-Int: _____

End Behavior: $x \rightarrow \text{_____}, f(x) \rightarrow \text{_____}$
 $x \rightarrow \text{_____}, f(x) \rightarrow \text{_____}$



4. $y = \left(\frac{1}{4}\right)^{x-1} - 3$

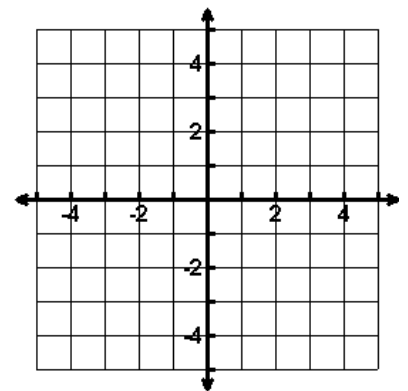
Transformations: _____

Domain: _____ Range: _____

Asymptote: _____ Inc or Dec _____

X-Int: _____ Y-Int: _____

End Behavior: $x \rightarrow \text{_____}, f(x) \rightarrow \text{_____}$
 $x \rightarrow \text{_____}, f(x) \rightarrow \text{_____}$



5. $y = \ln(x - 2)$

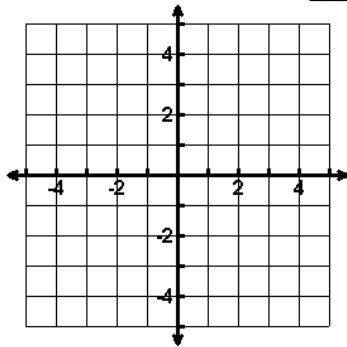
Transformations: _____

Domain: _____ Range: _____

Asymptote: _____ Inc or Dec _____

X-Int: _____ Y-Int: _____

End Behavior: $x \rightarrow \text{_____}, f(x) \rightarrow \text{_____}$
 $x \rightarrow \text{_____}, f(x) \rightarrow \text{_____}$



6. $y = e^{x+1} - 3$

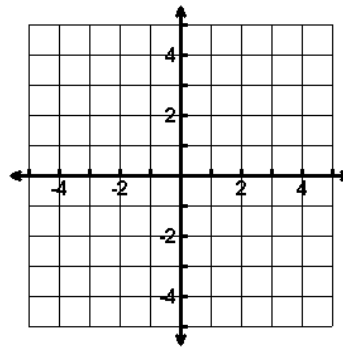
Transformations: _____

Domain: _____ Range: _____

Asymptote: _____ Inc or Dec _____

X-Int: _____ Y-Int: _____

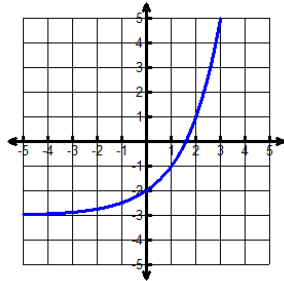
End Behavior: $x \rightarrow \text{_____}, f(x) \rightarrow \text{_____}$
 $x \rightarrow \text{_____}, f(x) \rightarrow \text{_____}$



7. A) Does the table or graph have a larger y-int?

B) Determine which is growth and which is decay.

X	F(x)
-3	6
-2	4
-1	3
0	2.5
1	2.25



8. Which table is a log function and which table is an exponential function?

X	F(x)
-0.5	1.731
0	3
1	9
2	27

X	F(x)
-0.5	-0.63
0	0
2	1
8	2

9. A) Is the table an Exp or Log Function?

B) What is type of asymptote does this have?

C) What is the equation of the asymptote?

X	F(x)
0.5	-0.63
1	0
3	1
9	2

10. A) Is the table Exponential or Logarithmic?

B) What is type of asymptote does this table have?

C) What is the equation of the asymptote?

X	F(x)
-3	-0.875
-2	-0.75
-1	-0.5
0	0
1	1
2	3